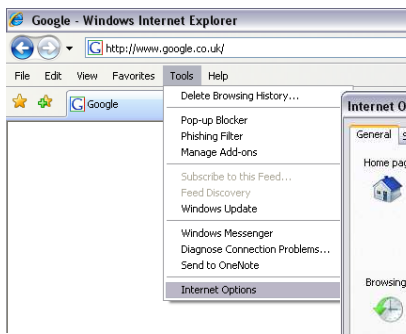


Regaining Control of the Internet

Using passwords to protect children from potentially harmful websites

1) In the internet explorer window, click **Tools** then **Internet Options**.



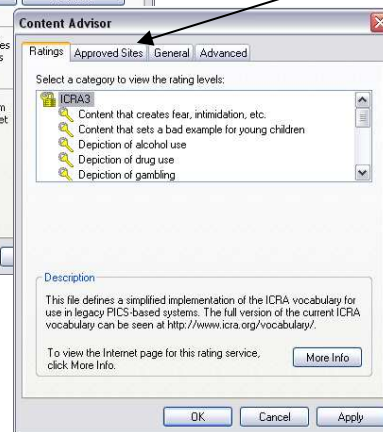
2) Click on the **Content** tab..



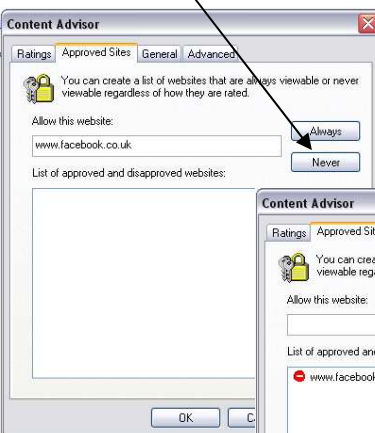
3) Click the **Enable** button..



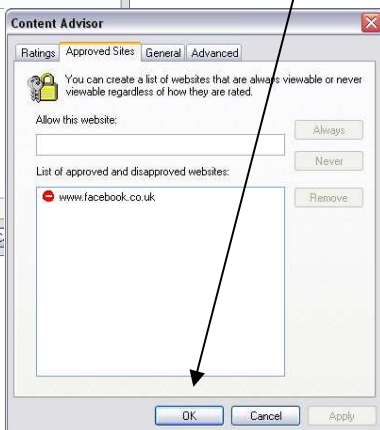
4) The content advisor window allows you to have a greater control over what is accessed via the internet. Click on **Approved Sites**..



5) You can create a list of sites that cannot be accessed without a supervisor password. Enter site name and click **Never**..



6) The website will now appear as a blocked site. Click **OK** and you will be prompted for a unique password.



7) Enter a secure password and hint. Every time the denied website is accessed this password will need to be entered before the user can view the site.



8) Now, whenever the denied websites are searched for, a password must be entered to allow access.

